

Pacific Symposium 2019

Welcome to
the 31st edition!

OCT 29 – NOV 4

SAN DIEGO, CA

PacificCollege.edu/symposium

Welcome to Pacific Symposium 2019!

Learn from the Best: Jeffrey Yuen | Matt Callison | Kiiko Matsumoto | Lillian Bridges
Jill Blakeway | Janet Zand | Stephen Cowan | Claudia Citkovitz
Susan Johnson | Bill Helm | Holly Guzman | John Chen

Chad Conner | Amy Albright | Dustin Dillberg | Deirdre Courtney
Rick Gold, Yuval Ron, & Úyanga Bold | Robert Nations
Brian Bradley | Hillary Thing

Pacific Symposium 2019 Schedule at a Glance - 56 CEUs/PDAs

Tuesday-Wednesday 10/29-10/30	Thursday 10/ 31	Friday 11/1	Saturday 11/2	Sunday 11/3	Monday 11/4	
<div>Two-Day Pre Sessions: 7 CEUs Per Day 9:00am-5:00pm</div> <div>The Spirit of the San Jiao: The Developmental Fu* Stephen Cowan Boardroom</div> <div>Cannabis and CBD Hemp from a TCM Perspective* Chad Conner Kon Tiki</div>	Morning Qigong (1 CEU per session, NCCAOM limits qigong PDAs to 4 units)				<div>One-Day Post Sessions: 7 CEUs Per Day 9:00am-5:00pm</div> <div>Kidney Treatments for Longevity and Detoxification Kiiko Matsumoto Boardroom</div> <div>A Balanced Diet & Gastrointestinal Issues from a Chinese Medical Perspective* Jeffrey Yuen Aviary</div>	
	7:00AM - 7:50AM	Dr. Xie Eight Energies Qigong Bill Helm Lawn	Dr. Xie Eight Energies Qigong Bill Helm Lawn	Dr. Xie Eight Energies Qigong Bill Helm Lawn		Dr. Xie Eight Energies Qigong Bill Helm Lawn
	8:45AM - 9:00AM MORNING ANNOUNCEMENTS	General Sessions (1 CEU per speaker/3 per morning)				
	9:00AM - 9:50AM	Diagnosing from Facial Colors* Lillian Bridges Aviary	Are We on the Same Page? TCM and the Modern Microbiome* Janet Zand Aviary	Energy Medicine: The Science and Mystery of Healing* Jill Blakeway Aviary		Introduction to Yang Sheng: Nurturing Life and Longevity* Bill Helm Aviary
	9:55AM - 10:45AM	Introduction to Peak Performance: Optimizing your Practice* Amy Albright Aviary	Introduction to Posture Therapy and Functional Medicine* Dustin Dillberg Aviary	Posture and Pain: A TCM Perspective* Matt Callison Aviary		Four Treatments Every Caesarean Section Patient Should Have* Claudia Citkovitz Aviary
	11:10AM - 12PM	Introduction to Cannabis Medicine from a TCM and Genomics Perspective* Chad Conner Aviary	Fundamentals of Yang Sheng: Food and Herbal Therapy* Deirdre Courtney Aviary	Introduction to Master Tung's Magic Points* Susan Johnson Aviary		Pain Management: Point Selections* Jeffrey Yuen Aviary
	Afternoon Qigong (1 CEU per session, NCCAOM limits qigong PDAs to 4 units)					
	12:15PM - 1:05 PM	Dr. Xie Eight Energies Qigong Robert Nations Lawn	Dr. Xie Eight Energies Qigong Robert Nations Lawn	Dr. Xie Eight Energies Qigong Robert Nations Lawn		Dr. Xie Eight Energies Qigong Robert Nations Lawn
	Afternoon Workshops (3 CEUs per workshop)					
	2:00PM - 5:00PM	Facial Manifestations of Shen* Lillian Bridges Toucan	TCM Microbiome Strategies: Mood, Weight Control, and Immunity* Janet Zand Macaw	Maximizing the Energetic Effects of Acupuncture Treatment* Jill Blakeway Macaw		The New Normal: Acupuncture to Prevent Unnecessary Labor Induction* Claudia Citkovitz Toucan
		Cannabis Medicine from a TCM and Genomics Perspective* Chad Conner Macaw	Yang Sheng: Food and Herbal Therapy* Deirdre Courtney Toucan	Diagnostic Ashi Points Matt Callison Toucan		Pain Management Based on Wai Ke/External Specialty* Jeffrey Yuen Macaw
		Peak Performance: Optimizing your Practice Amy Albright Cockatoo	Posture Therapy and Functional Medicine in your TCM Practice Dustin Dillberg Boardroom	Master Tung's Magic Points Susan Johnson Cockatoo		Blood Pressure and Autonomic Nerve Imbalances Kiiko Matsumoto Boardroom
		Physiology and Treatment of the Lymphatic System Rick Gold Boardroom	Treatment of Pediatric Allergies Moshe Heller WDE	The Egoscue Method Brian Bradley WDE		Yang Sheng: Nurturing Life and Longevity Bill Helm Cockatoo
	2:00PM - 4:00PM	Treatment of Lyme Disease with Chinese Medicine Hillary Thing WDE	Herb-Drug Interactions Update (2 CEUs per workshop) John Chen Cockatoo 2 PDAs in NCCAOM Safety credits are available	Difficult Decisions in Ethics (2 CEUs per workshop) Holly Guzman Boardroom 2 PDAs in NCCAOM Ethics credits are available		
	Parties (No CEUs)					
6:00PM - 7:00PM	Halloween Happy Hour Sponsored by Lhasa OMS Boardroom		PCOM Alumni & Faculty Reunion Boardroom			
Evening Sessions (1.5 CEUs per workshop)						
7:00PM - 8:30PM	Applying Chronobiology In the Clinical Setting* Jason Prall Aviary	Music as Medicine: Exploration of Healing Sounds Rick Gold/Yuval Ron/Uyanga Bold Aviary	Symposium Party Aviary Sponsored by Treasure of the East			

*Courses that will also be offered live-streamed.

WELCOME TO THE 31ST ANNUAL PACIFIC SYMPOSIUM



As we begin the fourth decade of Pacific Symposium, it is inspiring to see both the pioneers and the newer generations of practitioners continuing to advance our medicine, often in remarkable and surprising ways. This year we bring our diverse faculty to the beautiful Catamaran Resort, one block from the Pacific Ocean.

We are honored to host Stephen Cowan, MD, for a two-day workshop before the main event. He will present the Western concept of the neuro-gastro-immune complex that classical Chinese medicine conceptualized two thousand years ago as the San Jiao. He will apply both as means to understanding the dynamic processes of child development and treating chronic inflammation that manifest as fibromyalgia, allergies, intolerances, anxieties, and developmental disorders such as ADHD and autism. Moshe Heller will also address pediatric allergies during the main event.

While Cowan and Heller address children, Claudia Citkovitz will show us how to care for the new mothers. Stellar veteran faculty Jeffrey Yuen, Matt Callison, and Brian Bradley will address physical medicine and treatment of pain. Other veterans like Lillian Bridges, Jill Blakeway, Kiiko Matsumoto, and Janet Zand, Bill Helm, Robert Nations, and Chad Conner will cover everything from CBDs to the microbiome to qi gong. John Chen and Holly Guzman will present two-hour workshops to fulfill NCCAOM safety and ethics requirements.

Keeping it fresh, Pacific Symposium is pleased to introduce the following speakers to our audience for the first time: Susan Johnson, Amy Albright, Deirdre Courtney, Hillary Thing, and Dustin Dillberg, as well as the aforementioned Stephen Cowan and Moshe Heller. While new to Pacific Symposium, they represent decades of clinical experience across a fascinating array of topics. You will want to see them again!

We have two very special evening events. Jason Prall, producer of the Human Longevity Project will share experiences and scenes from the project and discuss the effects of circadian rhythm and chronobiology in a clinical setting. Grammy-nominated artists Rick Gold and Ron Yuval, with special guest Úyanga Bold, will discuss the healing effects of sound and demonstrate its power.

Last but not least, our community. Every year old and new friends gather together to learn, share and celebrate. Whether you join the symposium in person or online through our easy-to-use distance education platform, we welcome you.

Sincerely,

Jack Miller
President



SAVE THE DATE

PACIFIC SYMPOSIUM 2020

OCT. 29-NOV. 1

The annual Pacific Symposium is an opportunity to experience a community of healers while learning from innovators in the field.

Here's a preview of the inspiring 2020 speaker line-up.

Butch Levy • Aimee Raupp • Mary Elizabeth Wakefield
Neil Gumenick • Andrew Nugent-Head • Julie Nugent-Head
Clayton Shiu • Bill Helm • Robert Nations • Shellie Goldstein

Looking forward to seeing you again!

**For information and registration, please contact:
Symposium@PacificCollege.edu, or call: 619-732-3945
PacificCollege.edu/Symposium**

GENERAL INFORMATION

This section will help you get the most out of your conference experience. If you have any questions, please do not hesitate to ask a symposium team member. We are here to help make sure this event is memorable for everyone. Let the fun begin!

BADGES

In order to receive PDAs/CEUs, you MUST wear and have your badge scanned. Attendance is tracked via your Signature Verification Form and badge scans. You must get scanned for each lecture or workshop by the door monitor. Door monitors are designated by orange vests.

You must get scanned either in or out of each course you attend. The scanning schedule is as follows; morning lectures are scanned going in for the first lecture, out for the second lecture and out again for the third lecture. Qi gong, afternoon and evening lectures will be scanned going in. If you leave a lecture or workshop early or do not get scanned at the time of the lecture, you will not receive credit for that course.

LECTURES AND WORKSHOPS

All events are available on a first come, first serve basis. Arrive early to see your favorite speaker or topic. Space in some workshops may be limited by the room size or the hands-on nature of the presentation. If you encounter a “Workshop Closed” sign, please move on to your next choice. This policy helps to make everyone’s experience more enjoyable by avoiding overcrowded workshops.

If you missed a lecture, the Thursday—Sunday conference audio is available for purchase for \$99, see additional details in this program.

CEU/PDA SIGNATURE VERIFICATION FORMS

You will find an Attendance Verification Form in your attendee envelope: NCCAOM and CAB. Please legibly complete (Name, Address, Phone, Email, License #) on the Signature Verification Form. Your signature is required for each course you attend. Please add up your total hours. We cannot provide you a certificate without having received this form. Each lecture or workshop you attend must be signed, calculated, and turned in to the CEU/PDA box at the end of your registered time. Look for the Signature Verification Form boxes by the elevators.

CERTIFICATES

Certificates will only be emailed to attendees who paid for CEUs/PDAs by registering as a “Professional” attendee.

SURVEY

This form is located in your registration packet. Please submit it before you leave. Your feedback is very important to us for determining the future direction of this event. If you suggest speakers, please provide their contact information. When completed, place in the survey box by the elevators.

EVALUATIONS

These forms are located in your registration packet and are required for each course taken. See the registration desk if you need additional forms. Look for the evaluation box by the elevators.

TEA + COFFEE BREAK

Tea and coffee are served each day in both the Foyer and the Rousseau Exhibit Hall, mornings and afternoons, from 10:45am to 11:10am and 3:30pm to 3:45pm.

LUNCH BREAK, QI GONG, OR EXHIBIT HALL VISIT

12:00pm to 2:00pm

CONFERENCE RECORDINGS

Available for purchase at the registration booth.
Full main event (Thurs-Sun) audio available for \$99.

NOTE: Please respect the intellectual property of our speakers and symposium by refraining from audio or video recording of any part of the symposium. Packaged recordings from previous years are also available for purchase. The conference audio price of \$99 is a limited time offer, available only at the symposium. Pre/Post lectures not included.

Thank you for attending this year’s Pacific Symposium. We hope you have a truly enjoyable and enlightening experience!

Sincerely,

Jack Miller, President

Candace Unger, Pacific Symposium Coordinator



REGISTRATION DESK HOURS

Thursday: 7am-12pm, 1pm-5pm

Friday-Sunday: 8am-12pm, 1pm-5pm

EXHIBIT HALL HOURS

Friday: 10:30am-2:15pm
4:45pm-7:00pm

Saturday: 10:30am-2:15pm
4:45pm-7:00pm

Sunday: 8:30am-1pm

EVENING EVENTS

Thu 10/31:

6pm-7pm Halloween Happy Hour

7pm-8:30pm Applying Chronobiology
In the Clinical Setting* by Jason Prall

Fri 11/01:

7pm-8:30pm Music as Medicine:
Exploration of Healing Sounds by Rick
Gold/Yuval Ron/Úyanga Bold

Sat 11/02:

6pm-7pm PCOM Alumni & Faculty
Reunion

7pm-10pm Annual Symposium Party

SPEAKER SLIDES + NOTES

In the interest of environmental friendliness and to facilitate guest convenience, slides from our Pacific Symposium speakers are now stored in your individual symposium portal.

1. Please visit: <https://pacificsymposium.org/portal/handouts>
2. Log into your portal account using the same method you used when you registered (username and password, Facebook or Google account).
3. You will be redirected to the handouts page after you've successfully logged in.
4. If you're not being redirected, click on "Handouts" in the main navigational menu.

Handouts are available as PDFs. Speaker slides are organized by day. Please note: the presentations for the 2019 Pacific Symposium will not be printed as hand-outs.

CONFERENCE DETAILS

HOTEL ACCOMMODATIONS

The Catamaran Resort and Spa
3999 Mission Blvd., San Diego, CA 92109
1-800-422-8386
<https://www.catamaranresort.com/groups/PCOM2019>

MEETING SPACE AND SEATING

All seating is "first come first serve". All meeting spaces are locked while not in session and no items can be left in rooms to reserve a seat. For the afternoon workshops, the doors will open and seats become available 15 minutes prior to the start of the workshop start time. Plan accordingly and arrive early to lectures and workshops to secure a seat. Once a room is full and there are no seats remaining, please plan to go to another workshop location. No refunds will be granted for lack of seating in one's preferred courses.

PARKING

Please note the following rates if you are planning to park at the Catamaran Resort and Spa.
Hotel Guest: \$25, \$29 Valet
Non-Catamaran Hotel Guest: \$10 for the first hour, \$2 each additional 1/2 hour, daily maximum of \$35. Street parking is available. Please note the street sweeping signs posted in the Pacific Beach area.

CEU/PDA HOURS

Pacific Symposium provides up to 56 Continuing Education hours total (NCCAOM and CAB). You must pay the professional rate to receive CEU credit. Pacific College of Oriental Medicine Alumni receive 10% off the professional rate. Schedule is subject to change without notice. Any changes made to the CEU/PDA totals will be updated on the website.

RECORDING

By registering for the symposium, you understand that lectures and presentations held within the symposium venues may be video and/or audio recorded for internal, broadcast, non-broadcast and promotional purposes. As an audience member, some of these recordings may contain your likeness and/or your voice. By your registration, you grant Pacific Symposium and its affiliates the irrevocable right to record and use any recordings containing your likeness and/or your voice for internal, broadcast, non-broadcast, and promotional purposes. No personal audio or video recording will be permitted. Dismissal from the conference will be enforced. High quality CD recordings will be made of most sessions and available for purchase during and after the symposium.

Treasure of the East Ad

PRE-SYMPOSIUM WORKSHOPS

The Spirit of the San Jiao: The Developmental Fu*
by Stephen Cowan

14
CEU/PDA

Tuesday and Wednesday, October 29-30, 9:00am-5:00pm
Boardroom CAB Category: 1



Children are the “canaries in the coal mine” of our modern society: they show us what is needed to heal our world. The growth and development of a child’s early years lay the foundation for health throughout their life. The examination of patterns of growth and development lies at the heart of Chinese medicine and treating children is a perfect opportunity to deepen our understanding of Dao, yin-yang dynamics, and the Five Phase relations. The San Jiao Triple Burner is a novel concept in Chinese medicine that, until recently, was entirely overlooked in Western medicine. Recent advances in systems-based medicine in the West have begun identifying a unified neuro-gastro-immune complex that classical Chinese medicine conceptualized 2000 years ago in such texts as the Nanjing Classic of Difficulties. This has broad applications in understanding the dynamic processes of child development and treating the epidemics of alienation in our modern life. The San Jiao Triple Burner offers us ways to navigate the difficult and often confusing cases of chronic inflammation that manifest as fibromyalgia, allergies, intolerances, autoimmunities, anxieties, and developmental disorders such as ADHD and autism. Join Dr. Cowan in a deep dive into the ways to promote health, resilience, memory, and environmental coherence within the unity of body-mind-spirit in children of all ages. Acupuncture, qigong, tui na, craniosacral techniques, and herbs will all be included in this discussion.

Cannabis and CBD Hemp from a TCM Perspective*
by Chad Conner

14
CEU/PDA

Tuesday and Wednesday, October 29-30, 9:00am-5:00pm
Kon Tiki CAB Category: 1



Learn how cannabis sativa has been used traditionally within natural medicine, with an emphasis on TCM and Ayurvedic perspectives. Conner will also cover how to add cannabis sativa into traditional Chinese herb combinations and formulas. We will explore the importance of dosage and modes of administration to get the best results, including how to personalize the ratios of CBD to THC and terpene profiles, and how to read a certificate of analysis and apply it to TCM theory.

POST-SYMPOSIUM WORKSHOPS

Kidney Treatments for Longevity and Detoxification
by Kiiko Matsumoto

7
CEU/PDA

Monday November 4, 9:00am-5:00pm
Boardroom CAB Category: 1



The strength of the kidneys is important for the health of any patient, especially those with a history of long-term medication use—whether prescription or over the counter—as well as allergies, irregular eating, diabetes, or autoimmune disease. Because the kidney is the organ responsible for clearing many toxic substances from the body, treating the kidney can have wide-ranging systemic effects.

A Balanced Diet & Gastrointestinal Issues from a Chinese Medical Perspective* by Jeffrey Yuen

7
CEU/PDA

Monday November 4, 9:00am-5:00pm
Aviary CAB Category: 1



The notion of a “balanced diet” has often been espoused by nutritionists, but rarely has there been agreement as to what constitutes one. While there are diet plans that do work for some, they do not work for everyone. Chinese medicine contends that seasonal, individual, digestive, and constitutional factors account for the disparities in the efficacy of these diet plans. Since diet is a crucial cultivation of yang sheng, this seminar will focus on how to develop and tailor a diet plan specific to an individual based on his/her wellness or illness. In addition, we will review the digestive process from a Chinese medical perspective and how to treat certain gastrointestinal disorders through the application of Chinese dietary therapy.

***Course will also be offered live-streamed, online.**

DAILY

Daily, Early Morning, and Afternoon Qigong NCCAOM limits Qigong to 4 CEUs

The Crane Frolic Qigong by Bill Helm and Robert Nations

1
CEU/PDA

Daily, 7:00-7:50am & 12:15-1:05pm

Bayside Lawn

CAB Category: 1

Learn specific exercises in the Yi Jin Jing sequence to teach your patients. These can be useful in the treatment of conditions such as chronic musculoskeletal pain, fatigue, neck and shoulder tension, and shortness of breath.





Providing premium TCM herb granule products for over 70 years

EXPERIENCE

For over **70** years, Sun Ten has produced the highest quality herb extracts for more than 20 countries including the United States, Canada, Japan, Malaysia, Singapore, Australia, Switzerland, Germany & England.

AUTHENTICITY

Sun Ten is dedicated to consistent authenticity, efficacy, safety and quality of source herbs used. Verification of authenticity is determined through analytical scientific methods prior to acquisition of the source materials.

SAFETY

All of Sun Ten's source herbal materials are obtained from private growers and suppliers whose products meet our strict quality specifications.

Come visit us at booth:

#33

Sun Ten Laboratories - 9250 Jeronimo Rd., Irvine, CA, 92618-1905
Toll Free: 800-333-4372 | Local Phone: 949-587-1238 | Fax: 800-557-1260
Email: order@sunten.com | Website: sunten.com

THURSDAY October 31

All morning sessions are held in Aviary and start promptly at 8:45am with daily announcements!

Diagnosing from Facial Colors* by Lillian Bridges Aviary

1
CEU/PDA

Thursday, October 31, 9:00-9:50am

CAB Category: 1

The Chinese pictogram for color involves a radical for the face, implying that color on the face is important. In classical Chinese medicine, facial color was used extensively as part of the “looking” aspect of diagnosis. In this session, you will learn more about the diagnostic meanings of facial colors, and how the manifestation of these colors on specific parts of the face corresponds to the functioning of the internal organs. Bridges will also offer some recommended treatments for immediate use in the clinic.

Introduction to Peak Performance: Optimizing your Practice* by Amy Albright Aviary

1
CEU/PDA

Thursday, October 31, 9:55-10:45am

CAB Category: 1

Biohacking, an emergent area of healthcare, has been defined as the use of science and technology to change both the inner and outer environment to become the best version of the self. In this workshop, Albright will introduce some commonalities between TCM and biohacking, exploring concepts such as whether TCM is a form of biohacking, and explain how the philosophies and treatment principles of TCM and biohacking are aligned. Enhance your TCM practice with the introduction of metrics and treatments found within this new healthcare field.

Introduction to Cannabis Medicine from a TCM and Genomics Perspective* by Chad Conner Aviary

1
CEU/PDA

Thursday, October 31, 11:10am-12:05pm

CAB Category: 1

Western science personalizes medicine using the patient's genetic profile. Find out how this can be integrated with natural medicine and TCM, and how to use the resulting information to personalize cannabis medicine.

Physiology and Treatment of the Lymphatic System by Rick Gold Boardroom

3
CEU/PDA

Thursday, October 31, 2:00-5:00pm

CAB Category: 1

Our lymphatic system has two vital functions: the movement of metabolic ash, or toxic material, that is released from cells, effectively serving as the body's sewage system, and immune functions. In this second capacity, the lymphatics must be as uncongested as possible, so that our immune fighter cells can identify and destroy antigens and pathogens. In this workshop, we will explore the physiology of the lymphatic system from both the Western and East Asian perspectives as well as strategies to relieve lymphatic and blood stagnation—and thereby enhance immune potential.



LET'S GET SPOOKY!

**Thursday, 6pm-7pm
Boardroom**

Halloween Happy Hour!

SPONSORED BY:

LHASA  OMS®
EVERYTHING ACUPUNCTURE™

FRIDAY November 1

Are We on the Same Page? TCM and the Modern Microbiome* by Janet Zand [Aviary](#)

1
CEU/PDA

Friday, November 1, 9:00am-9:50am

CAB Category: 1

The human microbiome is currently one of the most exciting topics in life sciences. Will conventional medicine's acceptance of the microbiome lead to a bridging of the gap between modern medicine and traditional Chinese medicine? Ancient practitioners of TCM developed an understanding of the activity and primary importance of the microbiome—and even microorganisms. This session will introduce you to how TCM captures this microbiome balance and has the potential to improve weight management, longevity, immunity, and mental performance.

Introduction to Posture Therapy and Functional Medicine* by Dustin Dillberg [Aviary](#)

1
CEU/PDA

Friday, November 1, 9:55am-10:45am

CAB Category: 1

Dr. Dustin Dillberg will present multiple ways to make your Chinese medicine practice even more comprehensive, integrative, and effective using complementary therapies that are compatible with our Chinese medicine principles and philosophies. These include Foundation Training, breath work, laser therapy, the Egoscue Method, and in-office lab testing such as the omega index and functional medicine.

Fundamentals of Yang Sheng: Food and Herbal Therapy* by Deirdre Courtney [Aviary](#)

1
CEU/PDA

Friday, November 1, 11:10am-12:00pm

CAB Category: 1

Courtney presents the fundamental principles of Yang Sheng from classical Chinese medicine, using the teachings of Sun Si Miao, Yellow Emperor's Classic, and Herbal Compendiums. Learn how Yang Sheng food and herbal therapies can be adapted to modern Chinese medicine practice.

TCM Microbiome Strategies: Mood, Weight Control, and Immunity* by Janet Zand [Macaw](#)

3
CEU/PDA

Friday, November 1, 2:00pm-5:00pm

CAB Category: 1

As TCM practitioners, we are aware that drugs don't generally treat the underlying causes of chronic illness, and even our genes are not at the root of diseases. Instead the roots lie in diet, lifestyle, stress, how connected we are to our communities, toxic chemicals and pollutants in our environment, and the balance and wellness of our microbiome. The health of the microbiome has been linked to weight, mood, energy, immunity, and even longevity. This workshop will present strategies for combining new scientific microbiome information with TCM to further enhance the quality of your patients' lives.

Yang Sheng: Food and Herbal Therapy* by Deirdre Courtney [Toucan](#)

3
CEU/PDA

Friday, November 1, 2:00pm-5:00pm

CAB Category: 1

Food is the first and best medicine, yet it is important to use it in a way that is not just healing, but enjoyable and delicious. This workshop is designed to help you understand how food and herbs influence health, and how to choose foods based on temperature, taste, and nutritional value. Special attention will be paid to modern issues around food. Learn which foods and herbs are most helpful for common conditions seen in the clinic.

Posture Therapy and Functional Medicine in your TCM Practice by Dustin Dillberg [Boardroom](#)

3
CEU/PDA

Friday, November 1, 2:00pm-5:00pm

CAB Category: 1

Brought to life with cases from his private practice, Dr. Dillberg will present complementary therapies that are compatible with our Chinese medicine principles and philosophies, including the Egoscue Method and Foundation Training, breath work, and functional medicine. We will also cover neurological tests, omega index, and other in-office testing options. Discover the methods for integrating such modalities and examples of their progression during treatment

Treatment of Pediatric Allergies by Moshe Heller [WDE](#)

3
CEU/PDA

Friday, November 1, 2:00pm-5:00pm

CAB Category: 1

Allergies are becoming more prevalent—and causing a wide variety of symptoms. Fatigue, depression, anxiety, muscle pains, joint pains, headaches, brain fog, stomach aches, bloating and yes, even weight gain, could be related to allergies. In this workshop we will look at the pathomechanisms from both biomedical and Chinese medical perspectives. We will discuss Mast Cell Activation Syndrome, look at different treatment protocols, and use case studies to demonstrate the principles for treatment of pediatric allergies.

Herb-Drug Interactions Update by John Chen [Cockatoo](#)

2 PDAs in NCCAOM Safety credits are available

2
CEU/PDA

Friday, November 1, 2:00pm-4:00pm

CAB Category: 1

The practice of medicine is at a crossroads: countless patients are being treated simultaneously with both prescription medications and herbal formulas. Safety has become a major issue. Patients today are well-informed, and they want to know how compatible herbs are with their prescription medication and what possible adverse interactions they should be aware of. With some general insights in pharmacology, you can foresee possible interactions and thus take precautions to avoid incompatibilities.

Keynote Performance

Music as Medicine: Explorations of Healing Sounds
by Rick Gold/Yuval Ron/Úyanga Bold [Aviary](#)

1.5
CEU/PDA

Friday, November 1, 7:00pm-8:30pm

CAB Category: 1

This course will present how music and sound can enhance treatment and play a role in the movement and balancing of energy during and after treatment. Using information from the Nei Jing describing musical tones that influence the elements, participants will learn to incorporate music into their clinical sessions. Drawing from the Ayurvedic tradition, participants will learn the use of the sacred Aum chant in invoking and balancing the three doshas and academic insights from neuroscience and physics will be presented showing how music and sound can benefit the brain and the rest of the body.






MEDICAL CANNABIS CERTIFICATE FOR HEALTHCARE PROFESSIONALS

NEW!
100% ONLINE

8 CREDITS

3 COURSES:

-  Endocannabinoid System and Pharmacology
-  Clinical Medical Cannabis Guidelines and Professional Practice
-  Cannabis Care Capstone

PacificCollege.edu/MedicalCannabis

NOW ENROLLING FOR JAN 6, 2020

HEALTH AND HUMAN PERFORMANCE PROGRAMS

**CERTIFICATE HEALTH COACH
12 CREDITS | 4 COURSES**

AND

**MASTER OF SCIENCE HEALTH
AND HUMAN PERFORMANCE
36 CREDITS | 12 COURSES**

PacificCollege.edu/HHP

SATURDAY November 2

Energy Medicine: The Science and Mystery of Healing* by Jill Blakeway [Aviary](#)

1
CEU/PDA

Saturday November 2, 9:00am-9:50am

CAB Category: 1

What is the energy that heals us? A variety of prompts, both physical and psychological, can encourage the body to heal. In 2017, Harper Collins sent Jill Blakeway around the world in search of answers from the halls of academia, healers, researchers, and practitioners. The result is Energy Medicine: The Science and Mystery of Healing, which examines the healing modalities used to diagnose and treat illness by manipulating the energy that pulses through us. Blakeway will draw upon her research into acupuncture as a form of energy medicine and explore the science behind its profound effects.

Posture and Pain: A TCM Perspective* by Matt Callison [Aviary](#)

1
CEU/PDA

Saturday November 2, 9:55am-10:45am

CAB Category: 1

TCM practitioners understand that zang fu-related pathologies can contribute to the patient's musculoskeletal pain and dysfunction. This internal and external relationship must be diagnosed and treated for successful long-term outcomes. In 2011, Callison presented the results of over 100 postural assessment and TCM differential diagnosis case studies correlating specific postures with zang-related pathologies. This session will present the evolution of this ongoing research. Understanding the relationships between posture, the myofascial sequences (jingjin), and zang fu pathology allows you to further refine your assessment and treatment techniques.

Introduction to Master Tung's Magic Points* by Susan Johnson [Aviary](#)

1
CEU/PDA

Saturday November 2, 11:10am-12:00pm

CAB Category: 1

This session will begin with an introduction to the system, including a very brief history of Master Tung Ching Chang and Tung's Points in America. She will then cover in detail the seven theories implemented in choosing the proper acupuncture points within Tung's system, differentiating between pain management and organ system imbalances.

Maximizing the Energetic Effects of Acupuncture Treatment* by Jill Blakeway [Macaw](#)

3
CEU/PDA

Saturday November 2, 2:00pm-5:00pm

CAB Category: 1

In this workshop, Dr. Blakeway will share practical tools that practitioners can use in their own clinics to maximize acupuncture's energetic effects. We will discuss the Tao as the container for human experience, qi as the body's intelligence, and the role both play in self-healing. We will also explore the various prompts, physical, psychological, and emotional, that practitioners can give their patients to encourage the body to recalibrate, and the work of the Princeton PEAR lab and the CUNY mouse studies, as well as their significance to acupuncturists

Diagnostic Ashi Points by Matt Callison [Toucan](#)

3
CEU/PDA

Saturday November 2, 2:00pm-5:00pm

CAB Category: 1

In TCM, ashi points were first mentioned in the Tang Dynasty text Thousand Ducat Prescriptions and they are still used today to treat pain. Understanding that the channels and collaterals respond to pathologies in a predictable manner by manifesting ashi tenderness, we can see that an ashi point is a diagnostic sign of a specific underlying causative factor. This workshop will define diagnostic ashi points that reflect the status of the jing luo and the zang fu, then discuss and demonstrate treatment methods and needle techniques, both traditional and modern, that are geared toward treating the excess and/or deficient qualities of these ashi points.

Master Tung’s Magic Points by Susan Johnson [Cockatoo](#)

3
CEU/PDA

Saturday November 2, 2:00pm-5:00pm

CAB Category: 1

This workshop offers a thorough look at a few of Tung’s most relevant points or point patterns—the ones the instructor uses in her clinic all day, every day. As the symposium takes place in the fall, she will discuss the best points and point patterns for colds and flus, sinus infections, allergy to winter-pollinating trees, pneumonia, and other winter or fall-associated ailments. Learn points and point patterns through location, indications, operative theory and commentary, and video.

The Egoscue Method by Brian Bradley [WDE](#)

3
CEU/PDA

Saturday November 2, 2:00pm-5:00pm

CAB Category: 1

The Egoscue Method can synergize multiple therapies or performance enhacements into a stronger therapeutic whole. Through the simple exercises taught in this workshop, your patients will get better results from their complementary therapies. As the skeleton aligns, so will the body’s reaction to other treatment modalities. During this workshop, attendees will explore the causes of chronic pain and limitations to pain-free movement. Functional exercises will be discussed in detail and practiced.

Difficult Decisions in Ethics by Holly Guzman [Boardroom](#)

2 PDAs in NCCAOM Ethics credits are available

2
CEU/PDA

Saturday November 2, 2:00pm-4:00pm

CAB Category: 1

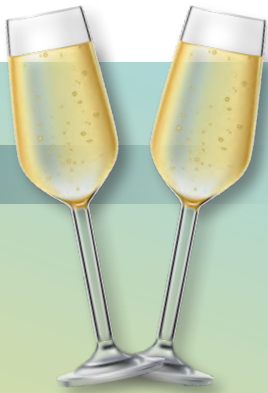
Knowledge of laws and regulations is basic. Social norms, and the sensitive subjects of power, money, and sex, are evolving differently between generations, populations, cultures, and religions. This workshop will consider these differing norms and present updates on gender considerations, conflicts of interest, scope of practice, kickbacks, reporting requirements, and boundaries for difficult patients. It will also consider decision-making protocols, as well as the six parameters of medical ethics that make right things right, and wrong things wrong.

PCOM ALUMNI REUNION

SATURDAY, NOVEMBER 2 6:00-7:00PM

Boardroom.

Mingle with old friends and new ones over drinks and light fare.



Booth: Rousseau #55 & 56 (1st Floor)

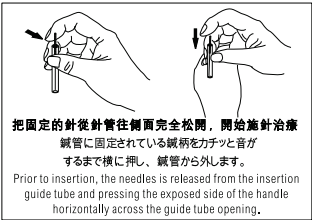
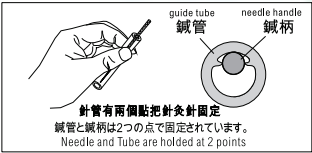
华宝 WABBO
ACUPUNCTURE SUPPLIES WHOLESALER

デイスポ鍼
光華

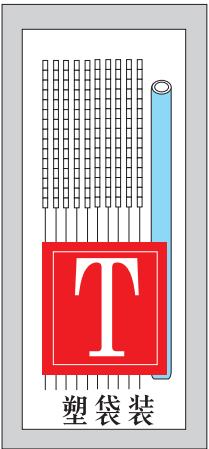
UniSHARP

ACUPUNCTURE NEEDLES

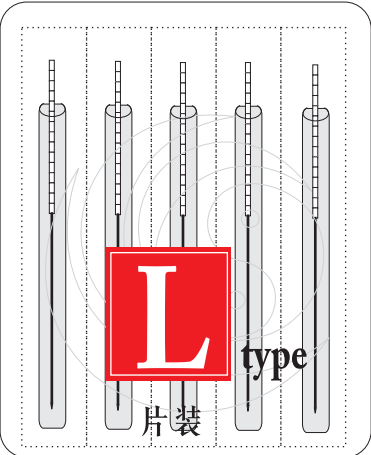
Korean Style Spring Handle



無
插
片
No
TAB



T-TYPE
10needles with one tube
1000pcs/box, 500boxes/case



L-TYPE
1needles with 1 tube
100pcs/box, 100boxes/case



\$12.50/BOX
(1000pcs)

On sale :11.01~11.08, 2019

3030 Grapevine Street, Mira Loma, CA 91752 Tel: 800. 852. 4609 or www.buyacupuncture.com. all copyright@2019 wabbo co.

WWW.BUYACUPUNCTURE.COM

SUNDAY November 3

Introduction to Yang Sheng: Nurturing Life and Longevity* by Bill Helm Aviary

1
CEU/PDA

Sunday November 3, 9:00am-9:50am CAB Category: 1

Yang sheng is the traditional study of how to nurture the life force to improve the quality and length of a person's life. Based on living harmoniously with the natural cycles of yin and yang and the Five Phases, yang sheng teaches how to follow these principles. Application, practical methods from multiple sources, and meditation methods will also be introduced.

Four Treatments Every Caesarean Section Patient Should Have* by Claudia Citkovitz Aviary

1
CEU/PDA

Sunday November 3, 9:55am-10:45am CAB Category: 1

Caesarean section is epidemic, including for many fertility patients. As much as we try to prevent Caesarean section, we can also be of tremendous help to patients who have undergone this routine, but highly invasive, abdominal surgery. Expect to learn a set of four key treatment strategies (and their appropriate time windows) to help reinstate normal qi and blood flow in the lower abdomen, reduce adhesions, prevent subsequent Caesarean sections, and reduce the risk of uterine rupture.

Pain Management: Point Selections* by Jeffrey Yuen Aviary

1
CEU/PDA

Sunday November 3, 11:10am-12:00pm CAB Category: 1

Historically, pain was commonly encountered in the Chinese military and its subsequent management evolved into wai ke, or external medicine, with many of its principles retained in the study of die dat, sports medicine or “bonesetting”, which provides practitioners with guidelines on how to manipulate the sinews and bones. Crucial to this understanding is the angle of manipulation, local and distal selection, bilateral and/or contralateral inclusion, and activation or desensitization of certain points or areas.

The New Normal: Acupuncture to Prevent Unnecessary Labor Induction* by Claudia Citkovitz Toucan

3
CEU/PDA

Sunday November 3, 2:00pm-5:00pm CAB Category: 1

Recent research suggests that maternal and fetal outcomes are better when labor is induced at 39 weeks, although the evidence is debatable. Acupuncturists in this course will learn to successfully engage patients and providers in that debate, suggesting prenatal acupuncture as a safe way to encourage timely natural onset of labor. Learn Dr. Citkovitz's approach to diagnosis and treatment for labor preparation. She will also cover diagnosis, needling, and manual therapies, as well as acupressure, moxa, and lifestyle homework.

Pain Management Based on Wai Ke/External Specialty* by Jeffrey Yuen Macaw

3
CEU/PDA

Sunday November 3, 2:00pm-5:00pm CAB Category: 1

Wai ke, or external medicine, evolved from the Chinese military's approach to pain. Many of its principles have been retained in the study of die dat, sports medicine or “bonesetting”, which provides practitioners with guidelines on how to manipulate the sinews and bones. Gain an understanding of the guiding principles of wai ke, how limb pain can manifest from other unresolved issues located in other regions of the body, and develop treatment strategies for chronic pain within the modalities of Chinese medicine.

Blood Pressure and Autonomic Nerve Imbalances by Kiiko Matsumoto Boardroom

3
CEU/PDA

Sunday November 3, 2:00pm-5:00pm CAB Category: 1

This course will focus on autonomic nerve imbalances, identifying patients as high or low blood pressure types (with or without an official medical diagnosis), and using these tendencies to determine autonomic nerve-based root treatments. We will discuss governing vessel points on the head, points selection, and how to treat a variety of complaints by addressing the underlying physiological imbalances.

Yang Sheng: Nurturing Life and Longevity by Bill Helm Cockatoo

3
CEU/PDA

Sunday November 3, 2:00pm-5:00pm CAB Category: 1

Yang sheng, which teaches how to live harmoniously with the natural cycles of yin and yang and the Five Phases, can improve the quality and length of a person's life. Application involves adjusting the vital substances of shen, qi, and jing. Practical methods from the Huang Di Nei Jing, Tao Te Ching, and the I Ching will be presented. Meditation methods for clearing and focusing the shen and qi gong exercises for generating and harmonizing the flow of qi will also be included.

SYMPOSIUM PARTY

SATURDAY, NOVEMBER 2, 7:30-10:00PM

Be sure to join our symposium party in the Aviary Ballroom! Enjoy live music, light dinner, and a cash bar. Make sure you bring your business card to enter the raffle sponsored by our generous symposium exhibitors. We give away amazing prizes!

CO- SPONSORED BY:



**BRING THE CONFERENCE
HOME WITH YOU!**

2019 CONFERENCE AUDIO RECORDINGS

**FULL PASS*
THURSDAY
-SUNDAY
ONLY**

\$99

LIMITED TIME OFFER NOT AVAILABLE FOR PURCHASE AFTER THE CONFERENCE

**AVAILABLE TO OUR
CONFERENCE ATTENDEES:**
MP3 recordings on a USB flash
drive—shipped to purchasers
within approximately two weeks

**RECORDINGS DO NOT INCLUDE
PRE AND POST**

Available at the registration desk

Pacific
Symposium
2019

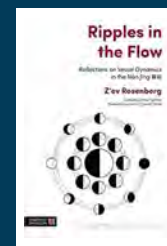
JEFFREY YUEN
MATT CALLISON
LILLIAN BRIDGES
JILL BLAKEWAY
JANET ZAND
STEPHEN COWAN

CLAUDIA CITKOVITZ
SUSAN JOHNSON
BILL HELM
HOLLY GUZMAN
JOHN CHEN
CHAD CONNER

AMY ALBRIGHT
DUSTIN DILLBERG
DEIRDRE COURTNEY
RICK GOLD
BRIAN BRADLEY
HILLARY THING

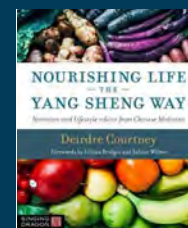
MEET THE AUTHORS! Book Signing Series

at the Pacific College booth



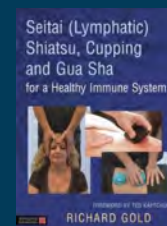
FRIDAY NOVEMBER 1ST 12:00PM-1:00PM

Ripples in the Flow
by Z'ev Rosenberg



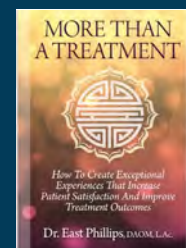
FRIDAY NOVEMBER 1ST 5:00PM-6:00PM

Nourishing Life the Yang Sheng Way
by Deirdre Courtney



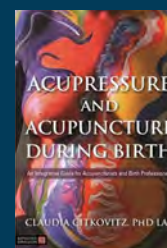
SATURDAY NOVEMBER 2ND 12:00PM-1:00PM

Seitai (Lymphatic) Shiatsu, Cupping and Gua Sha for a Healthy Immune System
by Richard Gold



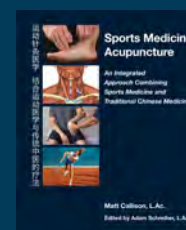
SATURDAY NOVEMBER 2ND 1:00PM-2:00PM

More than a Treatment
by East Haradin-Phillips



SATURDAY NOVEMBER 2ND 5:00PM-6:00PM

Acupressure and Acupuncture During Birth
by Claudia Citkovitz



SATURDAY NOVEMBER 2ND 6:00PM-7:00PM

Sports Medicine Acupuncture
by Matt Callison

EXHIBITOR APPRECIATION

We love and appreciate our fabulous exhibitors' community, without whom the event could not happen. A special, big shout-out to the faithful supporters who have been with us since the beginning!



2019 VENDOR CONTRIBUTING SPONSORS



PINS
+ NOTEPADS



LANYARDS



PENS



HALLOWEEN
HAPPY HOUR



CONFERENCE
BAG



ANNUAL SATURDAY
NIGHT PARTY



ALUMNI PARTY



ALUMNI PARTY



acumarket

THE SUPPLIER WHO SUPPORTS YOU



MADE IN KOREA

SMC 1,000 PACK

MADE IN KOREA

10 NEEDLES 1 TUBE

SAVE **BIG** VS OTHER
KOREAN BRANDS

why pay more?

Visit us in the Kon Tiki Ballroom to take advantage
of the Pacific Symposium Special of

\$16.99 / BOX FREE SHIPPING

WWW.ACU-MARKET.COM • 1.866.440.7703



**We Are Proud to Say We Have Over
70 Exhibitors Showcasing Their Products This Year!
EXHIBIT HALL OPEN TO ALL**



EXHIBIT HALL HOURS

FRIDAY: 10:30am - 2:15pm & 4:45 - 7:00pm

SATURDAY: 10:30am - 2:15pm & 4:45 - 7:00pm

SUNDAY: 8:30am - 1:00pm

- | | | |
|---------------------------------|---|--|
| • 5yina | • Enchanted Gardener | • Pantheon Research Inc. |
| • ActiveHerb Technology Inc. | • Erchonia | • Pacific College of Oriental Medicine |
| • Acu-Hub | • Essential Medicina | • Phivida Organics |
| • Acu-Market | • Essential Acupuncture | • Protocol For Life Balance |
| • Acupuncture Media Works | • Evergreen Herbs & Medical Supplies | • Pure Ratios |
| • Acurea | • Far East Summit | • Qualiherb / Finemost Corporation |
| • American Acupuncture Council | • Fat Turtle Herbal Pharmacy | • Relax FIR Master, Inc |
| • American Healing Technologies | • Five Flavors Herbs, Inc | • SEIRIN-America, Inc. |
| • Asia-Med GmbH | • Golden Flower Chinese Herbs | • Spring Wind Herbs |
| • Ayush Herbs | • Griffio Botanicals | • Sun Ten Pharmaceutical Co., Ltd |
| • Bio Essence Corporation | • Health Concerns | • TCMzone, LLC. |
| • Blue Poppy Enterprises | • Helio USA, Inc. | • The Egoscue Method |
| • Breakfast Cure | • Holistic Billing | • Treasure Of The East |
| • C.A.I Corporation | • Institute of Classical Five-Element Acupuncture | • Unified Practice |
| • Canada RNA Biochemical, Inc. | • Kan Herb Company | • UPC Medical |
| • Celluma (Biophotas) | • KPC | • Wabbo |
| • Chiromatrix (Imatrix) | • Lhasa OMS, Inc. | • Wholistic Dr. |
| • Crane Herb Company | • Mayway | |
| • CSOMA / ASA | • MIEC | |
| • Dr. Fuji | • Miridia Technology | |
| • Dragon Herbs | • Multi Radiance Medical | |
| • EarSeeds.com Inc. | • My Herbal Pharmacy | |
| • Eastland Press | • NCCAOM | |
| • E-Fong Herbs, Inc. | • NuHerbs Co. | |
| • Elixinol | • Nutragen | |
| | • Pacific Herbs | |

2019 EXHIBITORS

5yina

Rousseau Booth #66

Healthy Radiant Skin. Inspired by TCM.

5YINA harnesses the power of Chinese Medicine pharmacology with modern research to heal and strengthen your skin's resilience against pollution and environmental stress. Our products are formulated and extracted in-house by our team of practitioners, integrative biology, and dermatology experts. Each product is infused with potent medicinal plants and precious essences to nourish your skin and revitalize energy.

ActiveHerb Technology Inc.

Foyer Booth #44

Leading US provider of premium Chinese medicine. Their ActiveHerb and Guang Ci Tang products are guaranteed to be 5:1 concentrated, potent, and safe.

Acu-Hub

Rousseau Booth #48

AcuHub Born out of a necessity to help our profession meet the challenges of the modern age, we help acupuncturists stay current with common medical business practices and reinforce the profession position as a preferred healthcare modality.

Acu-Market

Kon Tiki Booth #29

Established in 2000. One of the largest suppliers of acupuncture, herbal, homeopathic, & supplements in the United States. Our products are sold exclusively by and through licensed healthcare practitioners & students. We do not sell to the public.

Acupuncture Media Works

Rousseau Booth #49

Acupuncture Media Works Acupuncture marketing supplies, patient education tools and acupuncture-specific websites

Acurea Medical, Inc.

Kon Tiki Booth #21

Offers a comprehensive range of Acupuncture and Herbal Supplies from one source; eco-friendly needle production and packaging; Three Treasures herbal line by Giovanni Maciocia.

American Acupuncture Council

Foyer Booth #43

The leader in providing professional liability insurance to Acupuncturists. AAC provides affordable, reliable malpractice insurance and is a proud supporter of PCOM.

American Healing Technologies

Kon Tiki Booth #27

Markets, distributes, and formulates high-quality TCM herbal formulas, Including 36 classical Tanglong Brand formulas, color-coded to the Five Element Theory.

Asia-Med GmbH/ Acurea

Kon Tiki Booth #22

Specializes in providing acupuncture needles. Product range Includes acupuncture needles, Streitberger placebo-needle, laser, and propoint.

Ayush Herbs

Rousseau Booth #76

Ayush Herbs A family-owned company designed for physicians and dedicated to combining modern medical science with the ancient wisdom of Ayurveda. Our USDA-certified organic herbs are grown by the Himalayas and exhaustively in-house and third-party tested.

2019 EXHIBITORS

Bio Essence Corporation

Kon Tiki Booth #17

MinTong Herbal extracts in granules, capsules, Bio Essence herbal formulas in tablet, Tang Long Brand Pill Formulas. Bio Essence Nutritional supplements.

Blue Poppy Enterprises

Kon Tiki Booth #3, #4

World leader in translated Chinese medicine information and Distance Learning education for practitioners of Chinese medicine.

Breakfast Cure

Rousseau Booth #52

Breakfast Cure Too busy for breakfast? Need a convenient meal that feels fabulous? Breakfast Cure makes it easy, fool-proof, delicious, organic, and gluten-free to wake up to breakfast that's soothing and easy to digest. Welcome to the wisdom of warm.

C. A. I. Corporation

Foyer Booth #39, #40

An advocate for the acupuncture profession for over 30 years, with members from licensed practitioners and teachers to students, suppliers, and educational institutions.

Canada RNA Biochemical, Inc.

Rousseau Booth #63

We specialize in niche natural medicine for practitioners. Remember to come by and sign up for a free coagulation health check an \$85 value!

Celluma (Biophotas)

Rousseau Booth #73

Unmatched in performance, power, and affordability, the 3-in-1 Celluma LED series panels effectively treat acne, wrinkles and pain. The award-winning Celluma panels are hands-free, portable, and space-saving.

Chiromatrix (imatrix)

Rousseau Booth #59

We specialize in websites and online marketing solutions for chiropractors with small to medium-size businesses who want to gain a larger local market share, attract new business, and engage current clients.

Crane Herb Company

Kon Tiki Booth #10, #11

Provides customers with over 4,000 items from 31 herb product lines— largest one-stop shopping site in the world for herbal needs. Compliant with FDA and other federal regulations.

CSOMA / ASA

Rousseau-Foyer Booth #77

CSOMA is a professional association of licensed acupuncturists and supporters of acupuncture. ASA promotes the highest standards of professional practice for Acupuncture and East Asian Medicine.

CW California

Rousseau Booth #70

CW California is a wholesale Distributor of premium Hemp supplements We are the Official Licensed & Preferred Distributor of the worlds most trusted hemp line “Charlotte’s Web – CW Hemp, in addition to Elixinol, Myriams Hope, Topikal CBD, Mantra CBD Face Mask, and Canniatric Cannabis and Hemp Products.

2019 EXHIBITORS

Dr. Fuji

Rousseau Booth #67

Our primary goal at Fujiiryoki USA, is to foster the physical well-being of our customers and to introduce quality products that will benefit each and every single customer's health.

Dragon Herbs

Kon Tiki Booth #18



Provider of health promoting herbs and complimentary services, including education and educational materials. We are dedicated to aiding and guiding you on your path to glowing health, and to building a better world as a result.

E-Fong Herbs, Inc.

Kon Tiki Booth #12

Their high-concentrate granulated TCM products are manufactured by Yifang Pharmaceutical Corporation in China and are specially packaged for distribution to licensed practitioners within the US.

Ear Seeds Inc.

Rousseau Booth #61

Creates unique resale-ready auriculotherapy products for clinical use, including Swarovski crystal ear pellets, essential oil infused ear seeds, and condition-specific ear chart kits.

Eastland Press

Kon Tiki Booth #35

Publishers of textbooks on Chinese medicine, osteopathy, and bodywork.

Elixinol

Rousseau Booth #74

We provide the highest-quality natural products, by providing information and education about ways to promote natural health and by actively contributing to organizations that align with our values.

Enchanted Gardener

Foyer

Enchanted Gardener helps home and business owners take care of their gardens, freeing them up for other pursuits in their busy lives.

Erchonia

Rousseau Booth #71

Founded in 1996, our commitment to the advancement of Low Level Laser Therapy (LLLT) through scientific and clinical research has transformed Erchonia into a world leader in the field of LLLT technology.

Essential Medicina

Rousseau Booth #68

Essential Medicina offers a selection of Tonic Latte blends, formulated by Dr. Eric Baumgartner L.Ac. using organic and wildcrafted adaptogens from Chinese, Ayurvedic, North and South American, and Western herbal traditions.

Evergreen Herbs and Medical Supplies

Foyer Booth #42

To serve the healthcare profession through quality herbal extracts and expert advice.

Far East Summit

Kon Tiki Booth #2

Manufactures liquid and powdered extracts and concentrates. Provides private label, packaging and contract manufacturing services to companies and professionally licensed practitioners.

2019 EXHIBITORS

Fat Turtle Herbal Pharmacy

Rousseau Booth #57

Your full service custom herbal formula pharmacy, using Spring Wind Herbs and other high quality suppliers. We provide raw herbs, vacuum pouches, granules and capsules and drop ship to patients.

Five Flavors Herbs, Inc

Rousseau Booth #46

Unites handcrafted remedies from Chinese and Western herbal traditions to offer custom formulation sources and Chinese herbal formula tinctures for herbal practitioners.

Golden Flower Chinese Herbs

Kon Tiki Booth #7, #8

Golden Flower Chinese Herbs has been providing practitioners with high-quality traditional and innovative herbal formulas since 1990. We also carry a complete line of acupuncture needles and supplies.

Griffo Botanicals

Rousseau Booth #62

Handcrafted, locally-produced liquid herbal extracts using the finest herbs available. Quality, effectiveness, and convenience.

JR13 TCM

Rousseau Booth #69

JR13 TCM has been making custom TCM formulas for 32 years. And we have never made them better than we do today. We are excited to introduce our consciously crafted CBD and a very unique Two Tigers.

Health Concerns

Foyer Booth #41

Manufactures Chinese herbs for practitioners, bringing centuries of tradition to the west.

Heller Acupuncture

Rousseau Booth #69

Heller Acupuncture is proud to launch our new herb line at PCOM Symposium 2019! An alumn and previous faculty member of PCOM, Moshe Heller has been practicing for over 25 years and has perfected these herbs blends for various issues such as fertility, allergies, vaccine support, among others. Stay tuned for more information about our proprietary blends!

Helio USA, Inc.

Kon Tiki Booth #31

Manufacturer and supplier of quality acupuncture needles such as AcuGlide, AcuMaster, Vinco, Viva and C&G brands.

Holistic Billing

Rousseau Booth #60

We are a healthcare consulting firm focused on servicing integrative medicine practitioners through a secure online portal. We offer acupuncture billing services and connect you with all major medical insurance companies.

Institute of Classical Five-Element Acupuncture

Foyer Booth #37

The Institute of Classical Five-Element Acupuncture Inc, under the direction of Professor Neil R. Gumenick, provides live continuing education, courses, DVDs, webinars, and articles for licensed acupuncturists, physicians, and students of Oriental Medicine.

2019 EXHIBITORS

Kan Herb Company

Kon Tiki Booth #5, #6

US manufacturer of high-quality Chinese Herbal Supplements for practitioners: Kan Herbals, Kan Traditionals, Chinese Modular Solidious, Sage Solutions, Gentle Warriors, MycoHerb.

KPC Products, Inc.

Kon Tiki Booth #9

KPC's products represent over a century of expertise in the selection of herbs. Our experience integrated with a state-of-the-art quality control system brings you herbs in their purest, most efficient form.

Lhasa OMS, Inc.

Kon Tiki Booth #25, #26

Offers the largest selection of professional grade acupuncture supplies with unmatched product discounts and superior customer service.

Mayway

Kon Tiki Booth #14, #15

Distributes exceptionally high-quality Chinese herbs and herbal products.

MIEC

Foyer Booth #38

Provides medical professional liability to acupuncturists in California, Hawaii, Alaska, and Idaho.

Miridia Technology

Rousseau Booth #51

Founded with the purpose of providing cutting-edge healthcare technology to the acupuncture industry. Our products reflect our commitment to the highest standards of quality, effectiveness and ease of use.

Multi Radiance Medical

Rousseau Booth #47

Our super pulsed laser technology is in the safest classification of lasers, its efficacy validated in vitro, in vivo, in controlled laboratory experiments, and in clinical practice.

My Herbal Pharmacy

Rousseau Booth #65

We are committed to advocating for and making available the use of herbal medicine. We help deliver essential medicine to a population that is increasingly suffering from both diseases and the side effects of pharmaceutical drugs.

NCCAOM

Rousseau Booth #53

The only national organization that validates entry-level competency in the practice of AOM through professional certification.

NuHerbs Co.

Kon Tiki Booth #13

Provides premium Chinese herbs, patent formulas, Herbal Extracts and Acupuncture supplies to practitioners, Including Herbal Times Teapills.

Nutragen

Rousseau Booth #50

Their formulas are of the highest purity and potency “from soil to seal” guaranteed!

2019 EXHIBITORS

Pacific Herbs

Kon Tiki Booth #19

We utilize the gold standard in pharmaceutical grade processing of full spectrum TCM formulas for the modern world, extensively tested for purity and potency.

Pantheon Research Inc.

Kon Tiki Booth #34

Provides US-manufactured, high-quality electroacupuncture devices and related equipment.

Pacific College of Oriental Medicine

Foyer Booth #36

Since 1986, PCOM has provided Oriental medical and Asian bodywork therapy education to students around the world while working to advance the standards of the profession.

Phivida Organics

Rousseau Booth #54

Phivida is a premium functional food and beverage company who believes whole plant nutrition and natural ingredients are our best way to maintain overall health and balance in our bodies.

Protocol For Life Balance

Rousseau Booth #72

Our comprehensive line of more than 150 dietary supplements offers you and your patients solutions at an average cost 25% lower than other leading professional brands, yet using the same trademarked ingredients as other leading brands.

Pure Ratios

Kon Tiki Booth #32

A San Diego-based health and wellness brand that takes an herbalist's approach to healing with cannabis. Each innovative product is formulated with a carefully-chosen combination of plants that enhance the adaptogenic powers of cannabis.

Qualiherb / Finemost Corporation

Kon Tiki Booth #36

Provides Chinese herbs and clinical support exclusively to practitioners of Chinese medicine

Relax FIR Master, Inc

Rousseau Booth #64

Specializing in exclusive far infrared technology for clinic use.

SEIRIN-America, Inc.

Kon Tiki Booth #23, #24

Provides acupuncturists with high-quality supplies. First company to provide hygienic, disposable acupuncture needles, which is today's standard for acupuncture treatments.

SpringWind Herb

Rousseau Booth #58

Fine Chinese herbs and herbal products since 1992.

Sun Ten Pharmaceutical Co., Ltd

Kon Tiki Booth #33

Main distributor of Sun Ten pharmaceutical-grade Chinese herbal extracts.

2019 EXHIBITORS

TCMzone, LLC.

Kon Tiki Booth #1

Provider of high-quality authentic Oriental medicine herbal products that continue to raise the standards in herbal medicine.

The Egoscue Method

Kon Tiki Booth #30

Offers certification programs for health practitioners to advance their career in client wellness and pain elimination.

Treasure of the East

Foyer Booth #45



Treasure of the East is the US general agent and distributor for Tianjiang Pharmaceutical. Treasure of the East provides a complete line of over 500 granule single herbs and formulas.

Unified Practice

Kon Tiki Booth #20

Technology dedicated to the needs of TCM physicians, including Electronic Medical Records.

UPC Medical Supplies / Go Acupuncture

Kon Tiki Booth #28

UPC Medical Supplies offers a complete of acupuncture supplies ranging from acupuncture needles, e-Stims, TDP Lamps to Chinese Herbal Medicine.

Wabbo Co.

Rousseau Booth #55, #56

WABBO specializes in the manufacturing & distributing of high quality Acupuncture Needles, Moxa, Cupping Sets, TDP Heat Lamps, Electro-therapy Stimulators, Foot Spa and Natural Herbal Formulas.

Wholistic Dr.

Rousseau Booth #75

An online platform for holistic doctors and practitioners to list their practice based on distance, insurance, cost, and reviews. Patients can make appointments using our website or app. Doctors/practitioners can exchange health records, lab works, and prescriptions, and talk/text with patients, as well as with other WholisticDr members



INDICATES 2019 PACIFIC SYMPOSIUM SPONSOR

DON'T FORGET

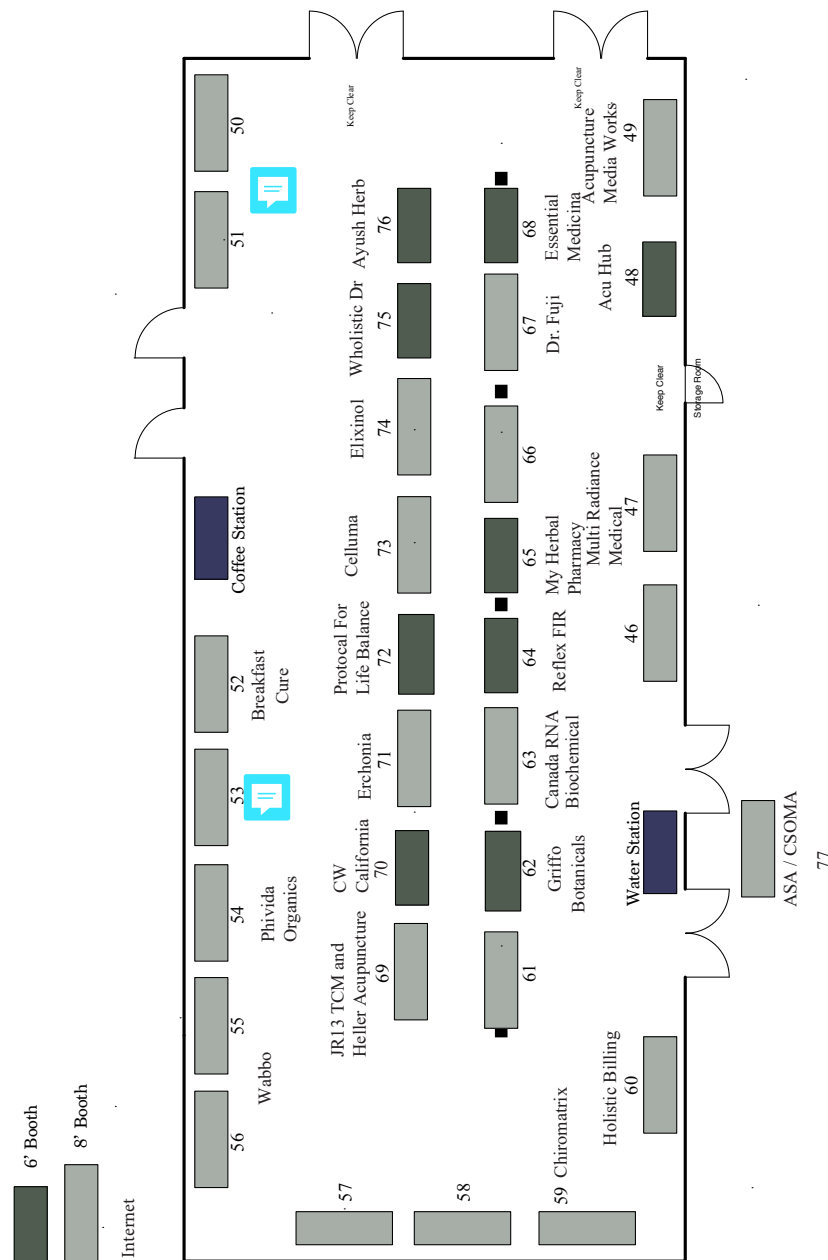
SUBMIT YOUR ATTENDANCE VERIFICATION FORM TO RECEIVE YOUR CEUS!

Your registration packet contains your CEU Attendance Verification Form. To receive credit for your attendance at the Pacific Symposium:

1. Sign your name next to each class you attended.
2. Circle the CEU/PDA hours next to each class you attended.
3. Tally your category totals from the front and back of each page.
4. Make sure to fill in your contact and license information CLEARLY and LEGIBLY.
5. For your records, take a picture of both sides of your CEU Attendance Verification Form before turning it in.
6. When you are finished attending your classes, return it to the CEU Attendance Verification Form box located by the Registration Booth.

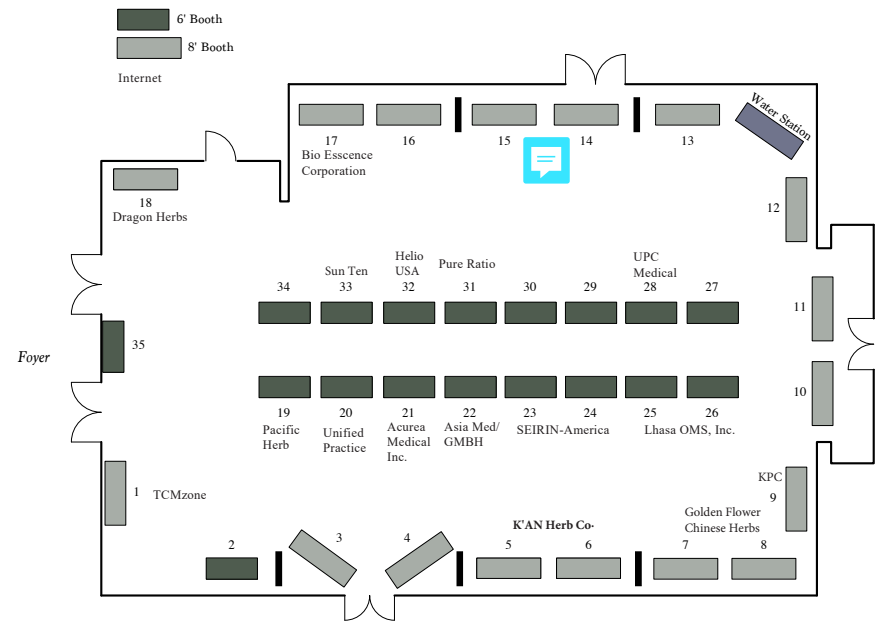
ROUSSEAU EXHIBIT HALL

EXHIBITOR
MAPS

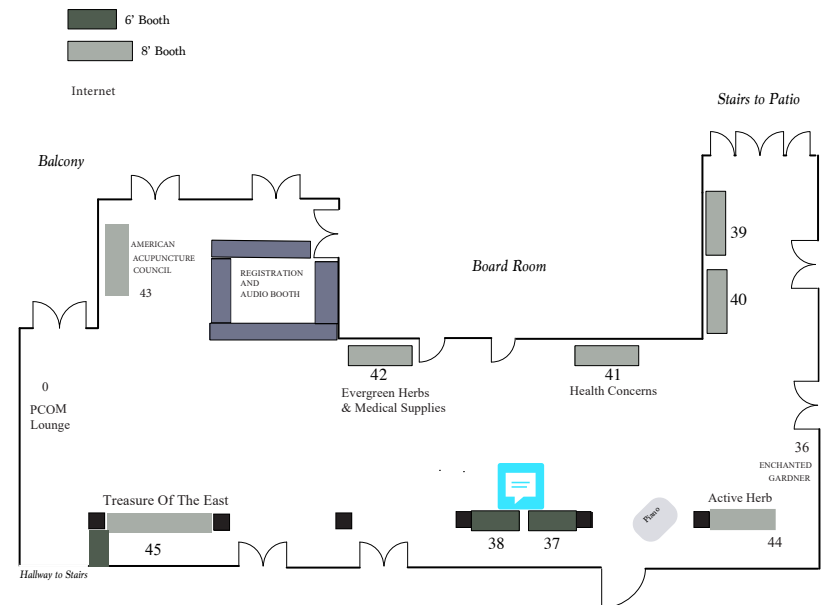


EXHIBITOR
MAPS

KON TIKI EXHIBIT HALL



FOYER EXHIBIT HALL



RESORT MAPS



RESORT SERVICES & OFFICES

- ★ Front Desk & Resort Lobby
- 1 Valet
- 2 Parking Attendant
- 3 Gift Shop
- 4 Sales & Conventions
- 5 Weddings & Catering

DINING

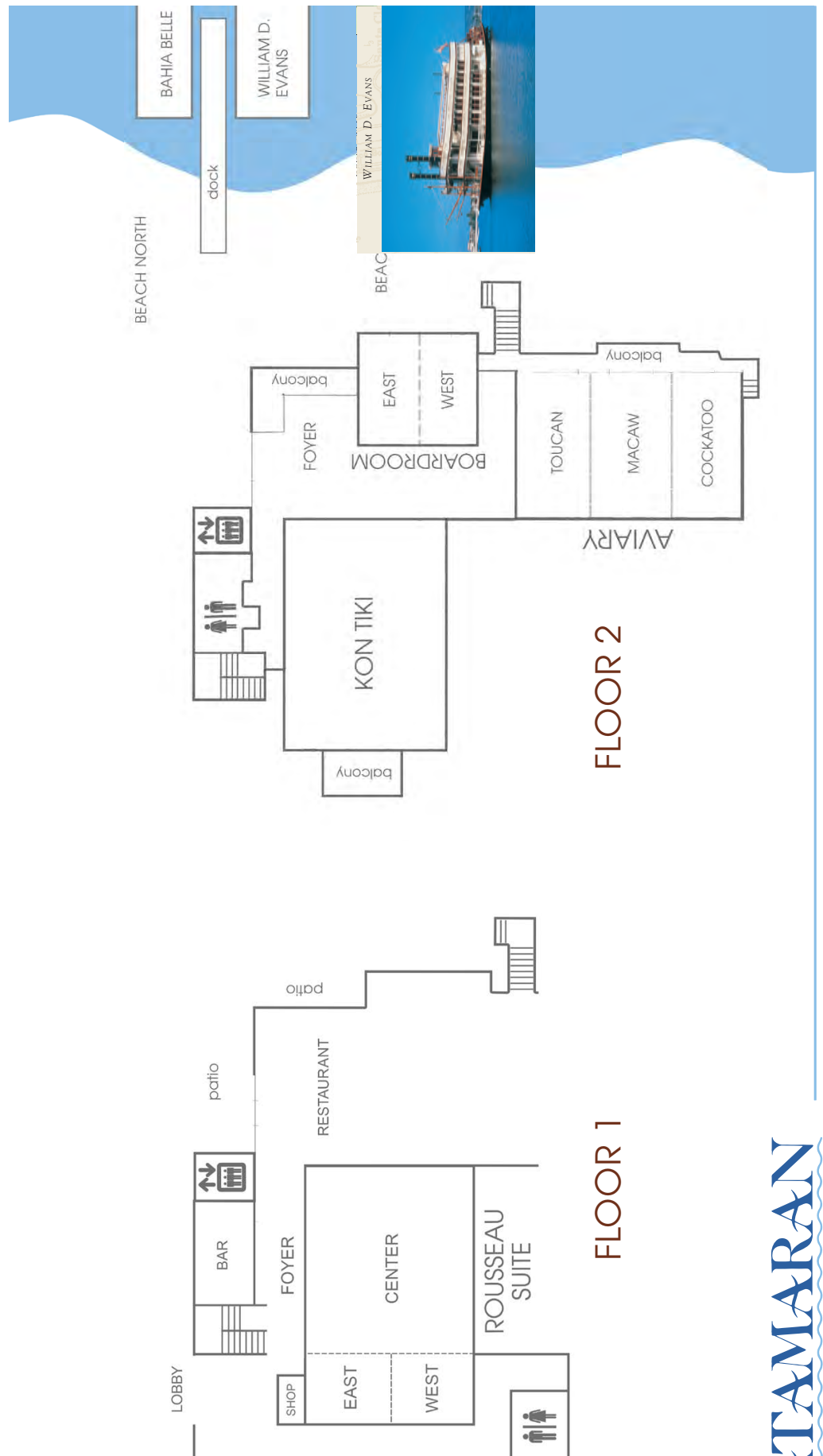
- 1 Oceana Coastal Kitchen
- 2 Moray's
- 3 Oasis Snack Shack (seasonal)
- 4 Pool Bar & Grill (seasonal)

RESORT AMENITIES

- 1 Catamaran Spa
- 2 Fitness Center & Whirlpool
- 3 Resort WaterSports
- 4 Bird Aviary
- 5 Pool & Whirlpool
- 6 Arcade
- 7 Beach Chairs & Umbrellas
- 8 Bahia Belle Boat Cruises

MEETING SPACES

- | | | |
|---|---|---------|
| 1 | Kon Tiki Ballroom | Floor 2 |
| 2 | Aviary Ballroom
Toucan, Macaw & Cockatoo | Floor 2 |
| 3 | Boardroom
East & West | Floor 2 |
| 4 | Rousseau Suite
Center, East & West | Floor 1 |
| 5 | Marquesas Suite | #308 |
| 6 | Beach North Lawn | |
| 7 | Beach South Lawn | |
| 8 | Bahia Belle Sternwheeler | |
| 9 | William D. Evans Sternwheeler | |





The Three Treasures

'Traditional Formulae for the Modern World'

created by Giovanni Maciocia®

Modern adaptation of traditional Chinese herbal formulae created by Giovanni Maciocia® – World renowned author and practitioner of Acupuncture and Chinese Medicine.



The Three Treasures® and The Little Treasures® combine classical prescriptions and new formulations designed by Giovanni Maciocia® to fill in what he perceived to be gaps in existing formulae from China and the West while the Women's Treasure® formulae are all variations of classical prescriptions.



The Three Treasures®

Classical Chinese formulae and modern originals based on his over 39 years of research and clinical experience.



Women's Treasure®

Women's Treasure® products are based on classical Chinese formulae with special added focus and consideration on women's health issues.



The Little Treasures®

These remedies have been formulated according to traditional Chinese pediatric formulas. The line addresses the most common children's complaints seen in a Western clinic.

TRIPLE TESTED
FOR SAFETY



All of The
Little Treasures®
formulae are
available in 50ml
liquid extract
tinctures

www.three-treasures.com